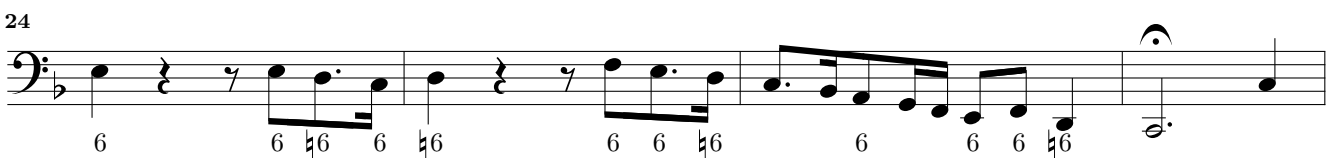
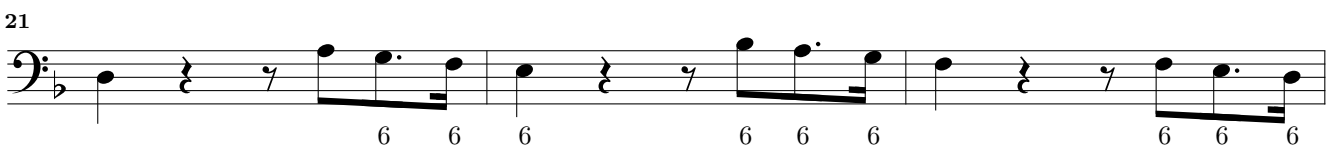
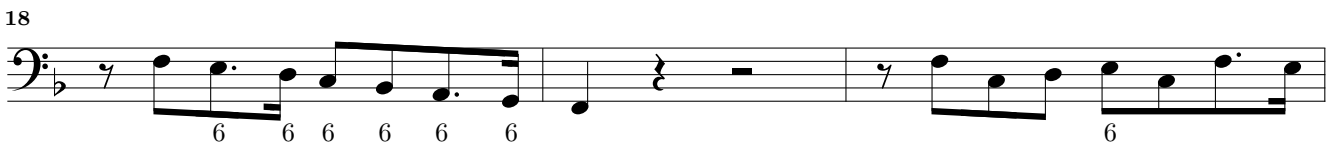
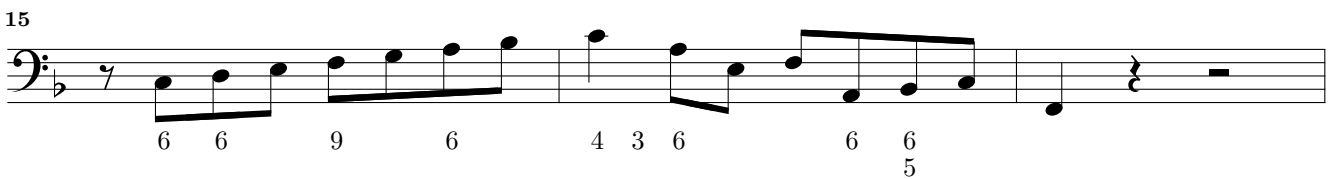
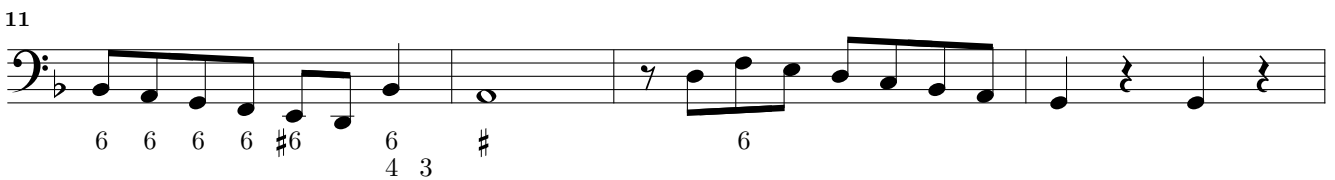


Cembalo

Sonata I

Dietrich Buxtehude

(c. 1637–1707)

Vivace*Lento*

4 *Allegro*

VII Suonate à doi, op. 1 – Sonata I – Cembalo

34 **6**

42

44

47

50

53

56

60

64

68

71

Adagio

74
 6 5 6 5 4 3 3 6 6 5 6 6 9 6 7 6 5 7 6 5 4 6
 80
 7 6 6 7 7 6 6 5 4 5 6 5 4 3 6 5 4 3

Andante

86
 6 6 6 6 6 6 4 3
 90
 6 6 6 6 6 6 6 5
 94
 6 6 6 6 6 6 5 4 3
 98
 6 6 6 6 6 6 5 4 3
 102
 6 6 6 6 6 6 5 4 3
 106
 7 6 6 6 6 6 4 3 6
 110
 6 6 6 6 6 6 4 3
 114
 6 6 9 6 6 4 3 6 8 2
 118
 6 6 8 6 6 5 6 6 9 7
 122
 6 6 4 6 4 3 6 6 9 7 7 5
 6 6 6 6 6 6 4 3 5

Grave

126

Musical notation for measures 126-131, Grave tempo. The notation is in bass clef with a common time signature (C). It features a series of half notes with a slur over the first six measures, followed by a quarter note and a half note in the seventh measure. Fingering numbers 2, 4, and 6 are indicated below the notes in the final measure.

132

Musical notation for measures 132-136, Grave tempo. The notation is in bass clef with a common time signature (C). It features a series of quarter notes and half notes with a slur over the final two measures. Fingering numbers 7, b6, 7, 7, 6, 7, 7, 6, 6, 6, 6, and 6 are indicated below the notes.

Presto

137

Musical notation for measures 137-139, Presto tempo. The notation is in bass clef with a common time signature (C). It features a series of eighth notes with a slur over the first three measures. Fingering numbers 6, 6, 7, 6, 6, 6, 6, 6, 7, 6, 6, 6, 6, 6, 7, 6, 6, and 6 are indicated below the notes.

140

Musical notation for measures 140-142, Presto tempo. The notation is in bass clef with a common time signature (C). It features a series of eighth notes and quarter notes with a slur over the first two measures. Fingering numbers 6, 7, 6, 6, 6, 6, 6, 6, and 6 are indicated below the notes.

143

Musical notation for measures 143-145, Presto tempo. The notation is in bass clef with a common time signature (C). It features a series of eighth notes and quarter notes with a slur over the first two measures. Fingering numbers 6, 6, 6, 5, 6, 5, and 5 are indicated below the notes.

146

Musical notation for measures 146-149, Presto tempo. The notation is in bass clef with a common time signature (C). It features a series of eighth notes and quarter notes with a slur over the first two measures. Fingering numbers 6, 6, 5, 7, 6, 6, and 6 are indicated below the notes.

150

Musical notation for measures 150-152, Presto tempo. The notation is in bass clef with a common time signature (C). It features a series of eighth notes and quarter notes with a slur over the first two measures. Fingering numbers b5, b5, 6, 6, 5, and 5 are indicated below the notes.

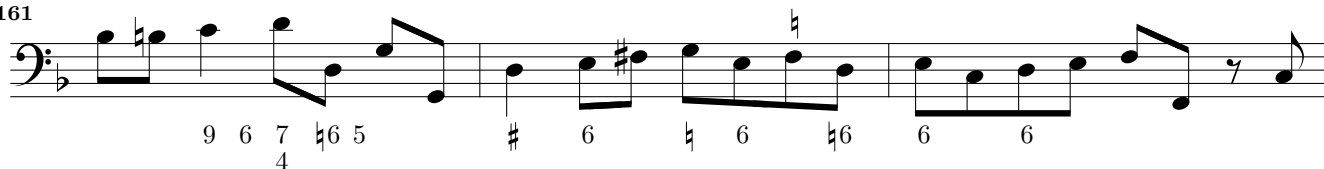
153

Musical notation for measures 153-156, Presto tempo. The notation is in bass clef with a common time signature (C). It features a series of eighth notes and quarter notes with a slur over the first two measures. Fingering numbers 6, 5, 6, 6, 6, 7, 6, 6, 6, #, #, and 6, 5 are indicated below the notes.

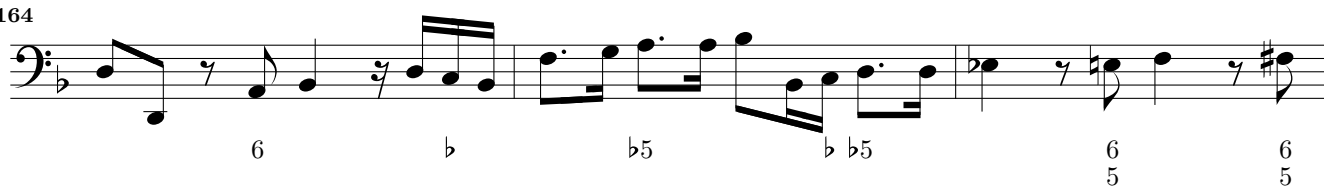
157



161



164



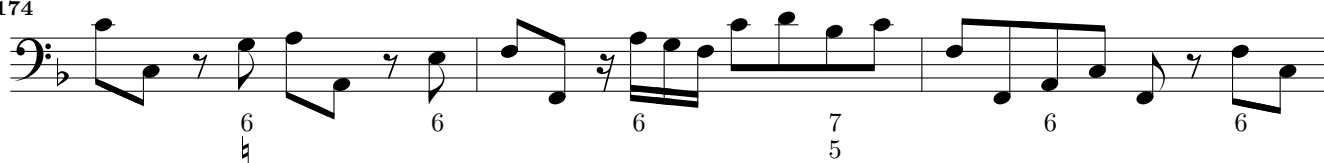
167



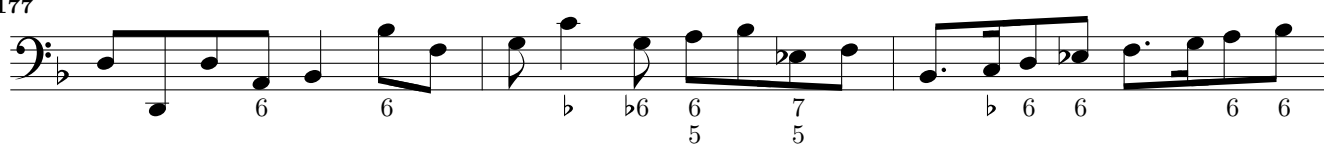
171



174



177



180

