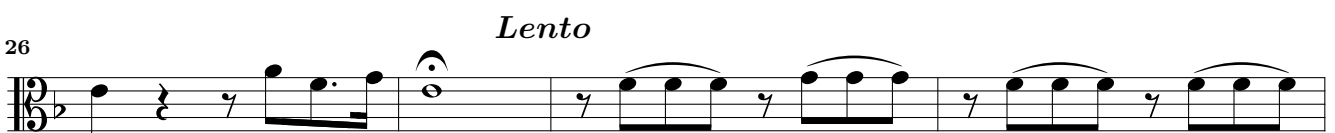


Viola da gamba

Sonata I

Dietrich Buxtehude
(c. 1637–1707)*Vivace*

Allegro

34 **3**

39

41

43

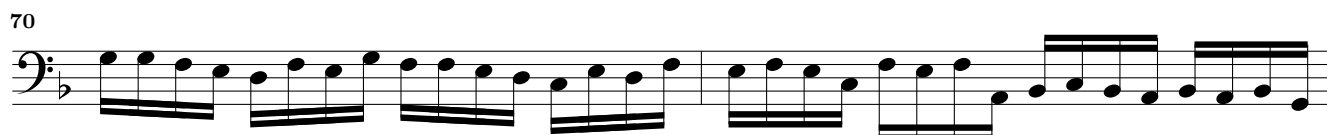
45

48

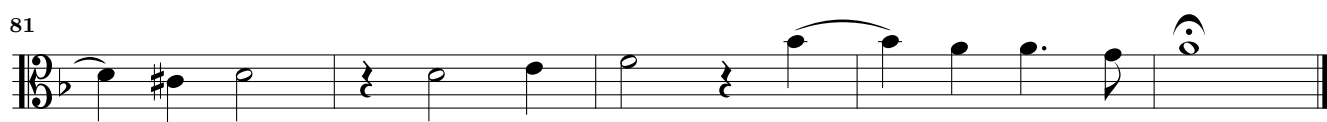
51

53

55



Adagio



86

13

Musical score for Viola da gamba, measures 86-123. The score is written in a grand staff (treble and bass clefs) with a key signature of one flat (B-flat). The tempo is marked *Andante*. The music features a complex rhythmic pattern with many sixteenth and thirty-second notes, often beamed together. There are several rests and dynamic markings, including a *b* (basso) marking above measure 102. The piece concludes with a double bar line and a common time signature (C) at the end of measure 123.

Grave

126

Musical score for Viola da gamba, measures 126-132. The tempo is marked *Grave*. The music is written in a grand staff with a key signature of one flat. It features a slower, more spacious feel with long note values and frequent rests. The piece concludes with a double bar line and a common time signature (C) at the end of measure 132.

Presto

137

Musical score for Viola da gamba, measures 137-140. The tempo is marked *Presto*. The music is written in a grand staff with a key signature of one flat. It features a fast, rhythmic pattern with many sixteenth notes. The piece concludes with a double bar line and a common time signature (C) at the end of measure 140.

144

146

149

152

155

157

160

163

166

169

172

175

178

181