

Violino

Sonata I

Dietrich Buxtehude
(c. 1637–1707)

Vivace*Lento*

Allegro

34

36

38

41

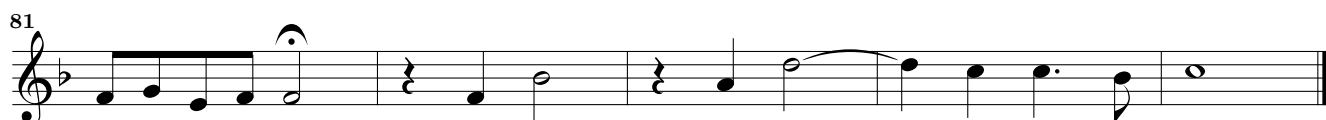
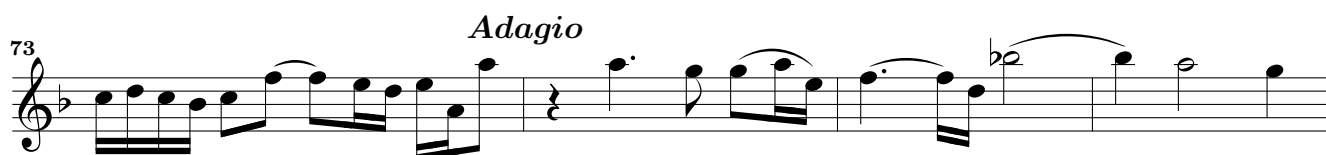
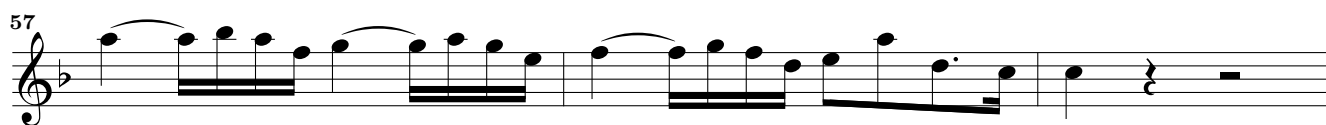
44

47

49

52

54



6 *Andante*

VII Suonate à doi, op. 1 – Sonata I – Violino

Musical score for the *Andante* section of Sonata I, Violino part. The score is written in treble clef with a key signature of one flat (B-flat) and a 6/8 time signature. It consists of 12 measures, numbered 86 to 121. The music features a variety of rhythmic patterns, including eighth and sixteenth notes, and rests. A fermata is placed over the final note of measure 121. A flat symbol (b) is positioned above the staff at the beginning of measure 86.

Grave

Musical score for the *Grave* section of Sonata I, Violino part. The score is written in treble clef with a key signature of one flat (B-flat) and a common time (C) signature. It consists of 6 measures, numbered 126 to 131. The music is characterized by slow, sustained notes and rests. A fermata is placed over the final note of measure 131.

Presto

Musical score for the *Presto* section of Sonata I, Violino part. The score is written in treble clef with a key signature of one flat (B-flat) and a common time (C) signature. It consists of 4 measures, numbered 137 to 140. The music is characterized by fast, rhythmic patterns, including eighth and sixteenth notes. Flat symbols (b) are positioned above the staff at the beginning of measures 137, 138, and 139.

Musical score for Violino, measures 143-181. The score is written in a single system with ten staves. The key signature is one flat (B-flat), and the time signature is 3/4. The music features a complex rhythmic pattern with many sixteenth and thirty-second notes, often beamed together. There are several fermatas and rests throughout the piece. The notation includes various accidentals (sharps, flats, naturals) and dynamic markings (accents, slurs). The piece concludes with a final cadence and a double bar line.