

VII
SONATE

à doi,

Violino & Viola da gamba,

con

Cembalo

Opera prima, Hamburg 1694(?)

Dietrich Buxtehude

1637 – 1707

Published by Johan Tufvesson.

Non-commercial copying welcome

Revision : 1.12

Sonata III

Dietrich Buxtehude (1637-1707)

Adagio

Musical score for the Adagio section of Sonata III by Dietrich Buxtehude. The score is written in treble clef with a common time signature (C). It consists of six staves of music, with measure numbers 5, 9, 12, 15, and 18 indicated at the beginning of their respective staves. The music features a mix of eighth and sixteenth notes, with some rests and accidentals.

Allegro

Musical score for the Allegro section of Sonata III by Dietrich Buxtehude. The score is written in treble clef with a common time signature (C). It consists of six staves of music, with measure numbers 22, 24, 26, 28, 30, and 33 indicated at the beginning of their respective staves. The music is characterized by rapid sixteenth-note passages and some rests.

35

37

39

41

44

47

50

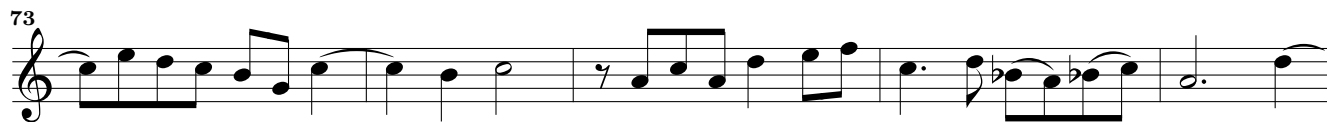
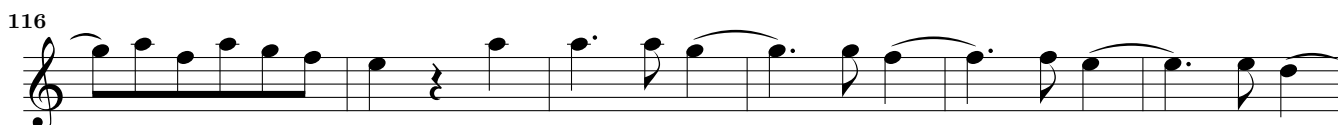
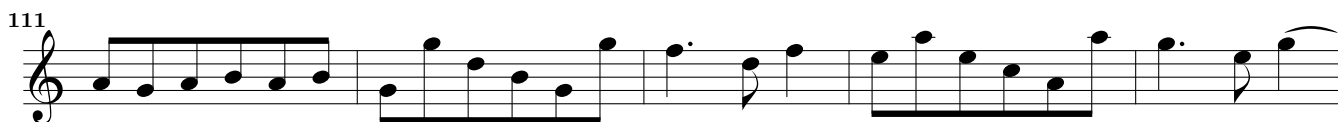
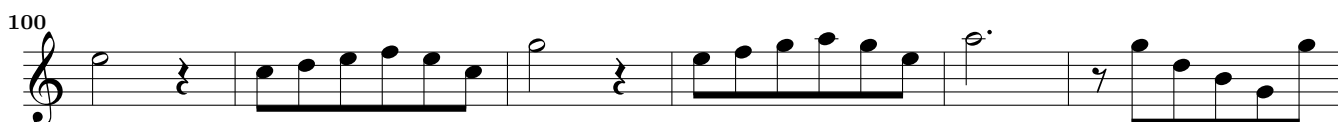
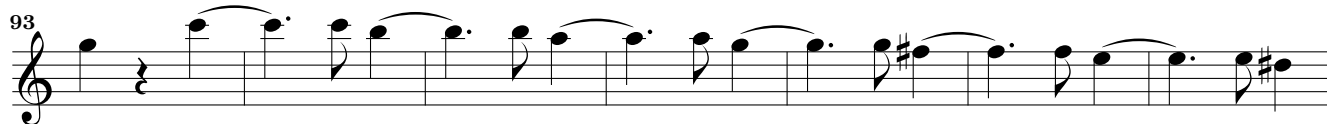
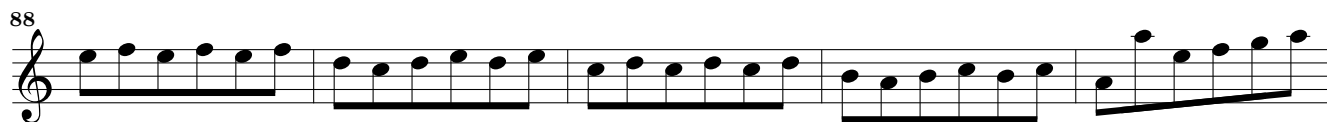
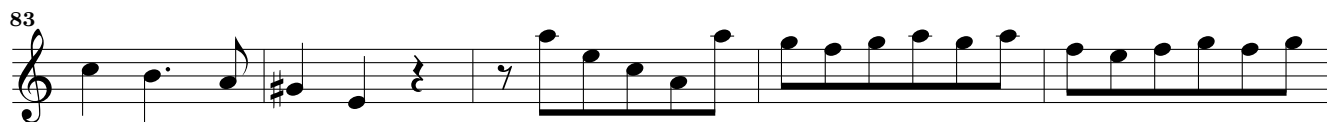
52

54

56

59

62

*Vivace*

128

134

139

145

151

156

161

167

173

179

184

191

195

Largo

The image shows a page of musical notation for a violin part. It consists of 12 staves of music, each starting with a measure number. The notation includes various rhythmic values, accidentals, and phrasing slurs. A tempo change to 'Largo' is indicated above the 184th measure. The key signature has one sharp (F#).

Presto

199

202

205

208

210

212

214

216

219

Detailed description: This image shows a page of musical notation for the Violin part of Sonata III from the VII Suonate à doi, op. 1. The page is numbered 16 and is titled 'VII Suonate à doi, op. 1 – Sonata III – Violino'. The tempo is marked 'Presto'. The music is in common time (C) and consists of nine staves of notation, each starting with a measure number: 199, 202, 205, 208, 210, 212, 214, 216, and 219. The notation includes various rhythmic values, accidentals (sharps, flats, naturals), and dynamic markings (accents, slurs). The key signature is one sharp (F#).

