

# Sonata ex G♯

a 3

doi violini e viol da gamba

## Dietrich Buxtehude

1637–1707

Published by Johan Tufvesson.

Non-commercial copying welcome

*Revision* : 2.12

# Sonata a 3

Dietrich Buxtehude (1637-1707)

Allegro  $\frac{4}{4}$

Musical score for Viol da gamba, Sonata a 3, Allegro  $\frac{4}{4}$ . The score consists of a single staff in bass clef. It begins with a whole rest, followed by a series of eighth and sixteenth notes, including some beamed sixteenth notes. Measure numbers 7, 9, 12, 14, 17, and 20 are indicated in small boxes at the start of their respective lines.

23 **Tacet**

7 10 18 Violino 1

Musical score for Violino 1, measures 23-26. Measure 23 is a whole rest. Measures 24, 25, and 26 contain eighth notes. Measure numbers 7, 10, and 18 are written below the staff. The text "Violino 1" is written above the staff.

60 **Adagio a 3**

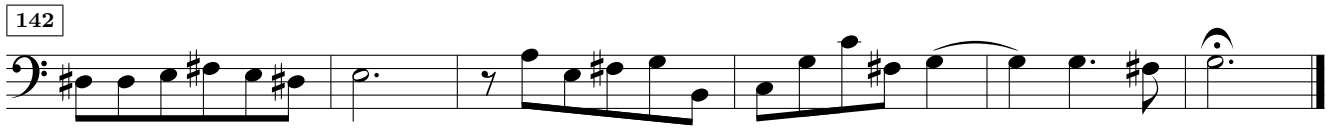
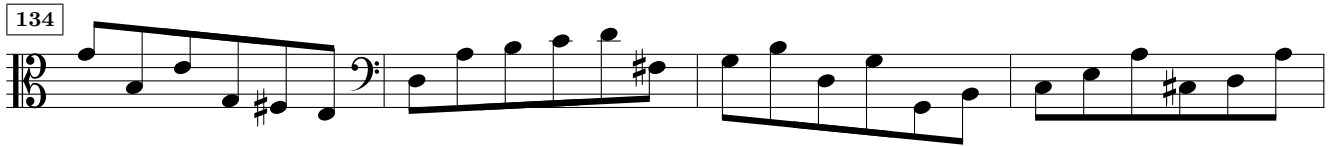
Musical score for Viol da gamba, Sonata a 3, Adagio a 3. The score consists of a single staff in bass clef with a 3/4 time signature. It features a series of quarter notes. Measure numbers 60 and 65 are indicated in small boxes at the start of their respective lines.

71 **Allegro**

Musical score for Viol da gamba, Sonata a 3, Allegro. The score consists of a single staff in bass clef with a 3/4 time signature. It features a series of quarter notes. Measure numbers 23 and 23 are written below the staff. The text "Violino 2" is written below the staff.

Musical score for Viol da gamba, Sonata a 3, Allegro. The score consists of a single staff in bass clef with a 3/4 time signature. It features a series of quarter notes. Measure number 121 is indicated in a small box at the start of the line.

Musical score for Viol da gamba, Sonata a 3, Allegro. The score consists of a single staff in bass clef with a 3/4 time signature. It features a series of quarter notes. Measure number 129 is indicated in a small box at the start of the line.



(Allegro)

