

Violino Primo, Oboe & Flauto Traversi

Suite in E \sharp
a 4. voci

Fortunato Chelleri
1688 – 1757

Published by Johan Tufvesson.

Non-commercial copying welcome

Revision : 1.11

Violino Primo

Ouverture

Fortunato Chelleri (1688–1757)

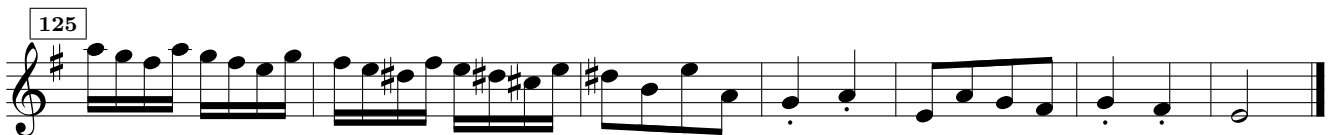
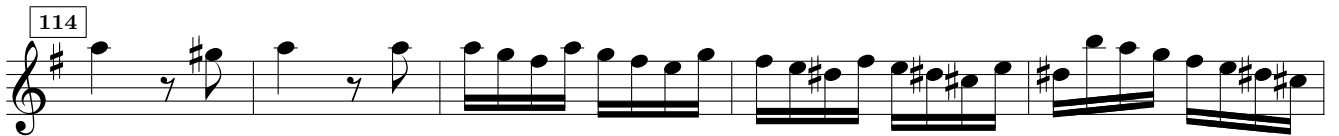
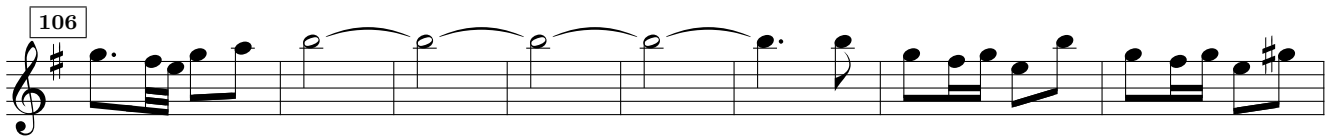
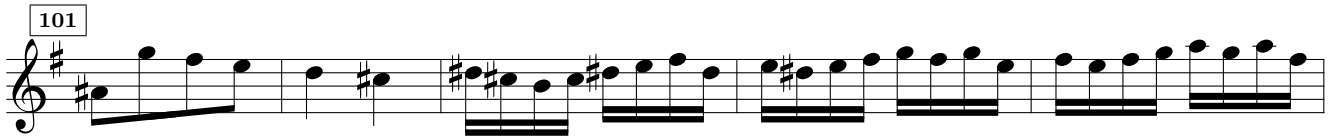
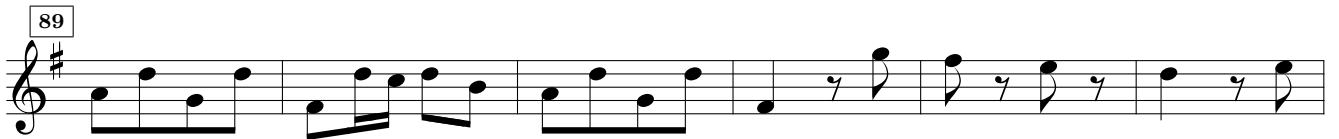
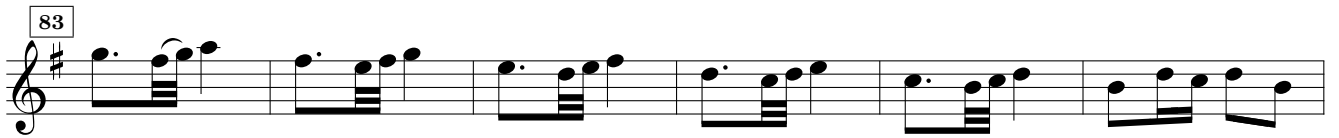
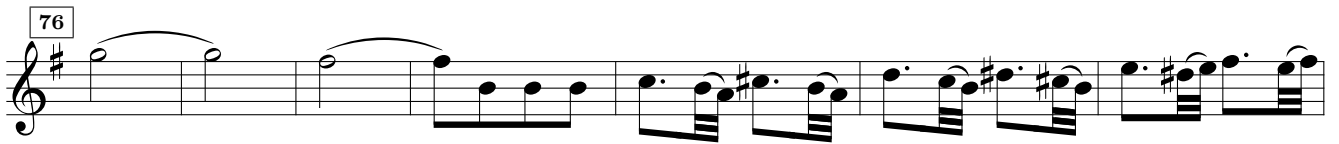
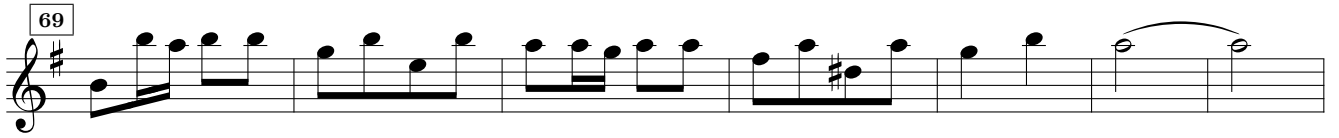
Ouverture

Violino Primo &
Oboe

Musical score for the first section of the Overture, measures 1-14. The music is in G major and common time. It features a melodic line with various ornaments, including trills and grace notes. Measure 11 includes a first and second ending bracket.

Allegro

Musical score for the second section of the Overture, measures 15-52. The tempo is marked Allegro and the time signature changes to 2/4. The music is characterized by a steady eighth-note pattern. Measure 39 is marked *piano*. Measure 44 features a trill ornament.



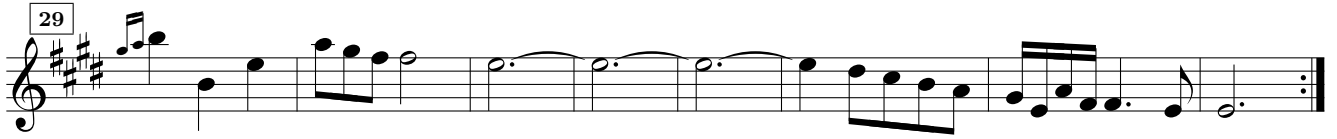
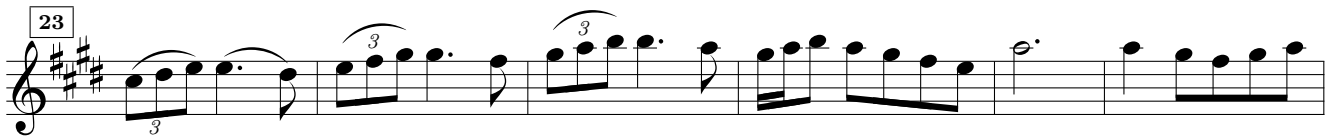
Andante

Musical score for 'Andante' in G major, 2/4 time. The score consists of six staves of music. The first staff begins with a treble clef, a key signature of one sharp (F#), and a 2/4 time signature. The music features a mix of eighth and sixteenth notes, with some slurs and accents. Measure numbers 6, 12, 18, 24, and 30 are indicated in boxes at the start of their respective staves. The piece concludes with a double bar line and repeat dots.

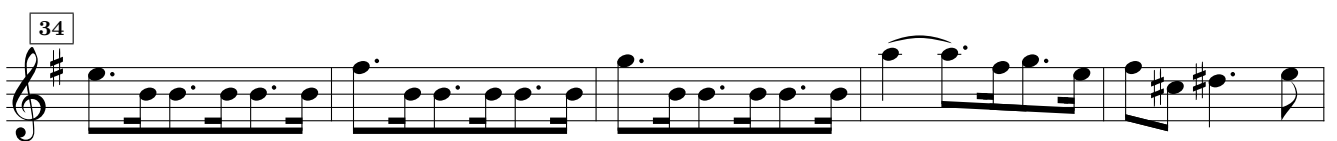
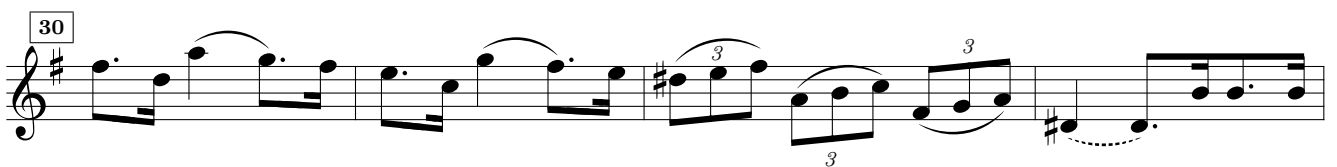
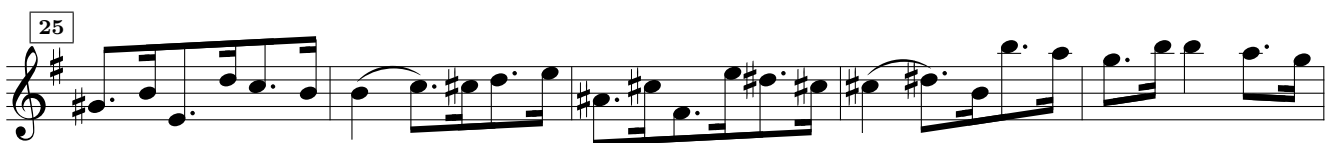
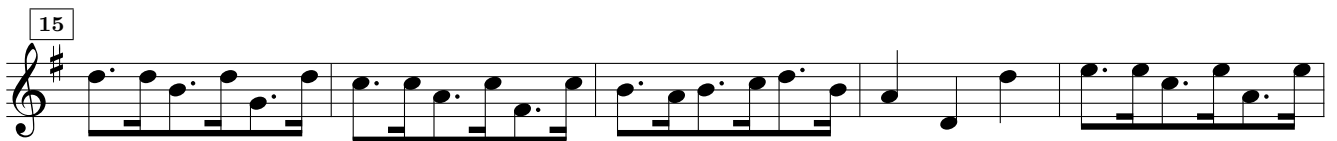
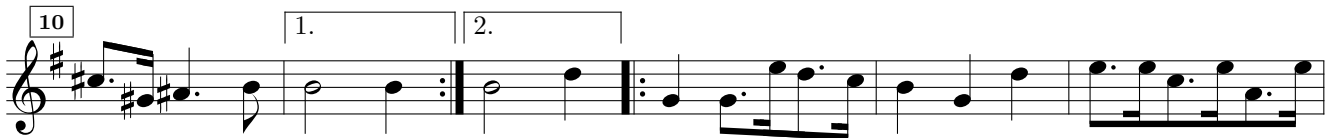
Lamento

Violino Primo & Flauto Traversi
Violin Con Sordin

Musical score for 'Lamento' in G major, 3/4 time. The score is for Violino Primo & Flauto Traversi and includes the instruction 'Violin Con Sordin'. The music is characterized by a somber mood, featuring many triplets and slurs. The first staff begins with a treble clef, a key signature of one sharp (F#), and a 3/4 time signature. Measure numbers 6, 11, and 17 are indicated in boxes. The word 'piano' is written below the second staff. The score includes first and second endings at measure 11 and concludes with a double bar line and repeat dots.



Courante



Gigha

Menuet