

Partita

Oboe, Violino Obligato, Violini, Viola, Basso

BeRI 8

Johan Helmich Roman

1694 – 1758

Published by Johan Tufvesson.

Non-commercial copying welcome

Revision : 1.1

2
Cembalo e Contra Basso

Partita

BeRI 8

Johan Helmich Roman (1694–1758)

1. Largo

8

15

22

30

16

21

27

32

37

42

9

56

61

65

69

73

78

83

87

91

97

102

107

112

117

122

127

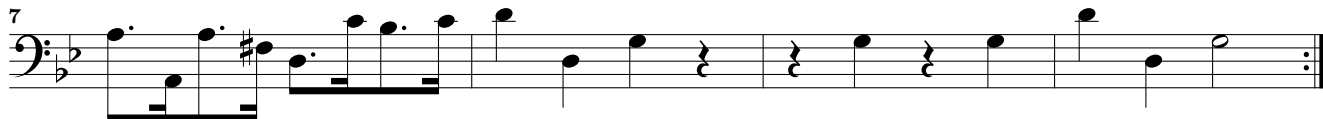
131

2

Adagio

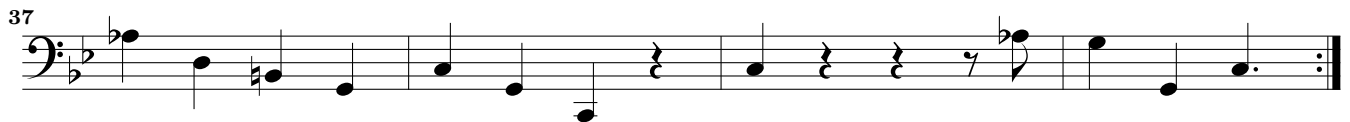
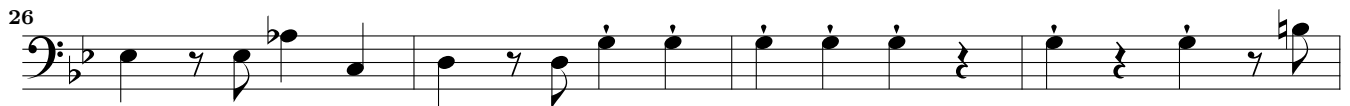
The image shows a page of musical notation for the Bassoon part of Roman BeRI 8. It consists of 13 staves of music, each starting with a measure number. The key signature is B-flat major (two flats). The music features various note values including quarter notes, half notes, and full notes, with some measures containing rests. There are several slurs and ties used throughout the piece. A first ending bracket with a '2' is present at measure 91. The tempo marking 'Adagio' appears below the 127th measure. The piece concludes with a double bar line at the end of the 131st measure.

3. Con Spirito

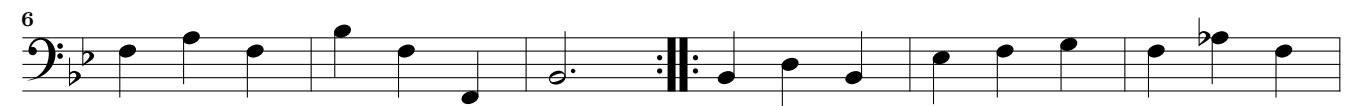


4. Andante





5. Largo Sempre piano



6. Presto e forte

5

9

13

17

21

25

29

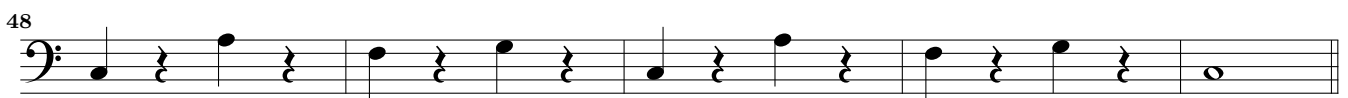
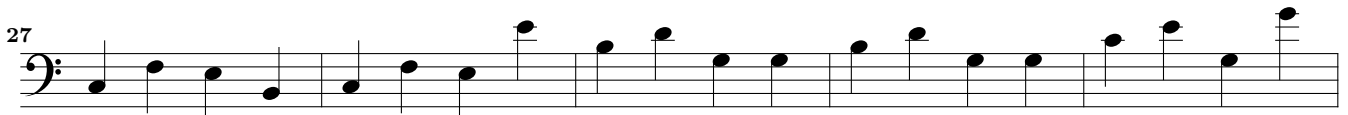
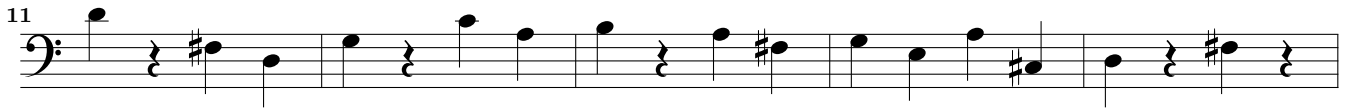
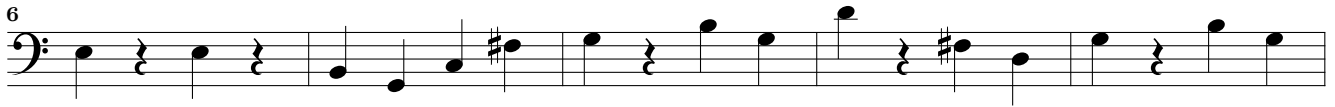
33

37

42

46

7.



(Fine)



Da Capo

8. Minuetto

Musical score for Minuetto, bass clef, 3/4 time signature. The score consists of four staves of music. The first staff starts with a treble clef and a 3/4 time signature. The second staff begins with a measure rest, followed by a double bar line with repeat dots. The third staff contains a section marked with a 'S' symbol. The fourth staff ends with a double bar line and repeat dots.

9. Presto

Musical score for Presto, bass clef, 3/8 time signature. The score consists of seven staves of music. The first staff begins with a treble clef and a 3/8 time signature. The second staff starts with a measure rest. The third staff contains a section marked with a 'S' symbol. The fourth staff ends with a double bar line and repeat dots. The fifth staff begins with a treble clef and a 3/8 time signature. The sixth staff starts with a measure rest. The seventh staff ends with a double bar line and repeat dots.

