

# Sonata ex G♯

a 3

doi violini e viol da gamba

## Dietrich Buxtehude

1637–1707

Published by Johan Tufvesson.

Non-commercial copying welcome

*Revision* : 2.12

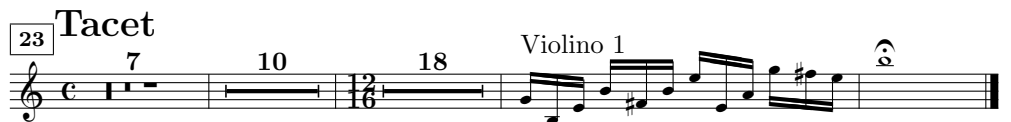
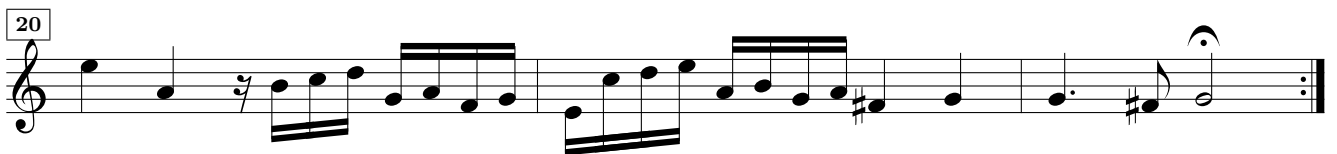
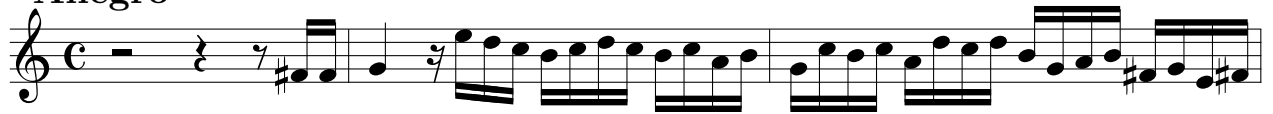


Violino 2<sup>do</sup>

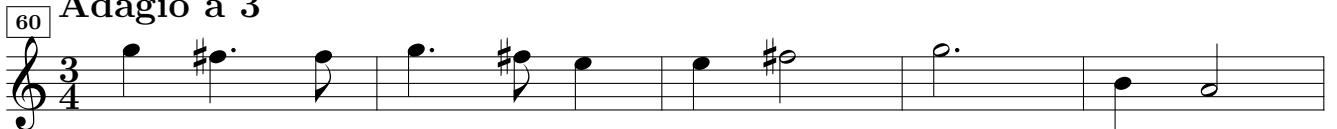
## Sonata a 3

Dietrich Buxtehude (1637-1707)

Allegro



Adagio a 3



2  
Allegro  
71 23

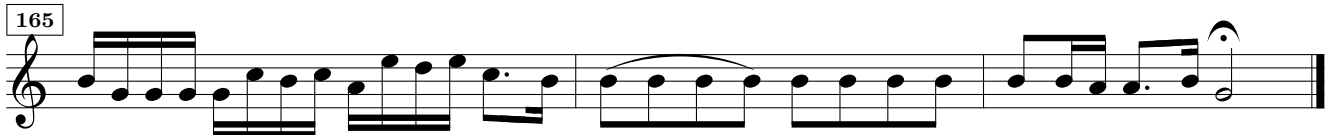
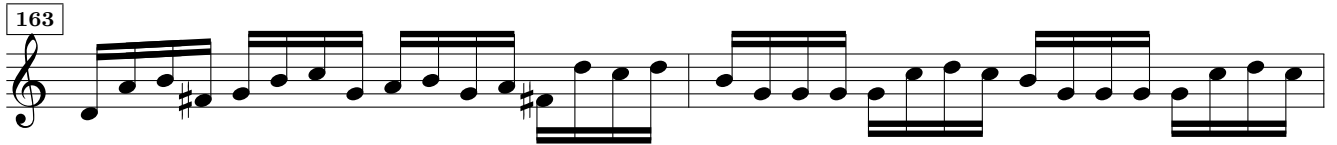
Musical score for the Allegro section, measures 71 to 140. The music is written in treble clef with a 3/4 time signature. It features a series of eighth and sixteenth notes, often beamed together, with various accidentals (sharps and naturals) and rests. Measure numbers 71, 99, 106, 112, 118, 125, 132, and 140 are indicated in boxes at the start of their respective lines.

Adagio

Musical score for the Adagio section, measures 148 to 152. The music is written in treble clef with a common time (C) signature. It features a slower tempo with a mix of quarter and eighth notes, some with slurs and accents. Measure numbers 148, 150, and 152 are indicated in boxes at the start of their respective lines.

Allegro

Musical score for the Allegro section, measures 155 to 157. The music is written in treble clef with a 3/4 time signature. It features a fast tempo with a series of eighth and sixteenth notes, often beamed together, with various accidentals. Measure numbers 155 and 157 are indicated in boxes at the start of their respective lines.



(Allegro)

