

Partita

Oboe, Violino Obligato, Violini, Viola, Basso

BeRI 8

Johan Helmich Roman

1694 – 1758

Published by Johan Tufvesson.

Non-commercial copying welcome

Revision : 1.1

2
Cembalo e Contra Basso

Partita

BeRI 8

Johan Helmich Roman (1694–1758)

1. Largo

8

15

22

30

16

21

27

32

37

42

9

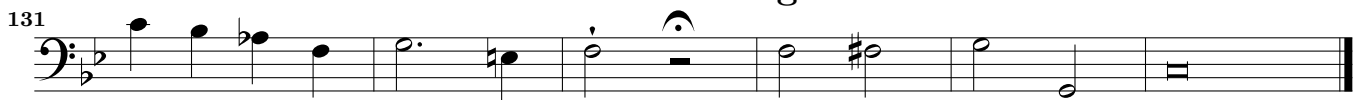
56

61

65



Adagio



3. Con Spirito



4. Andante



11



16



19



22



26



30



33



37



5. Largo Sempre piano



6



12



18



6. Presto e forte

1

5

9

13

17

21

25

29

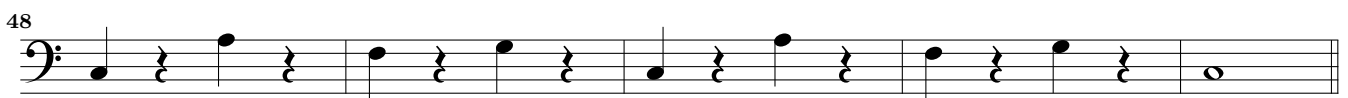
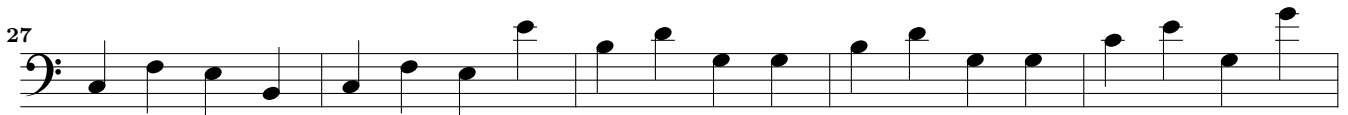
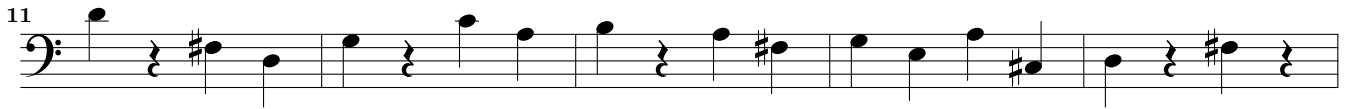
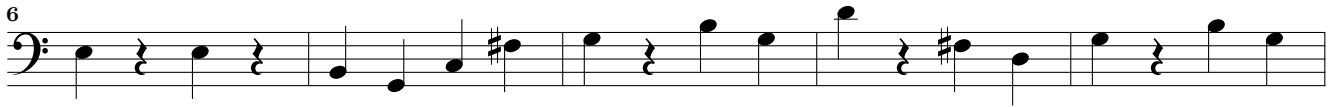
33

37

42

46

7.

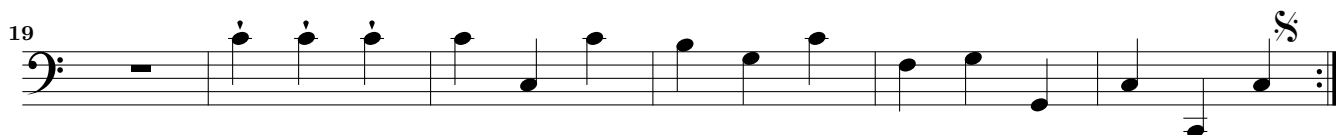


(Fine)



Da Capo

8. Minuetto



9. Presto

